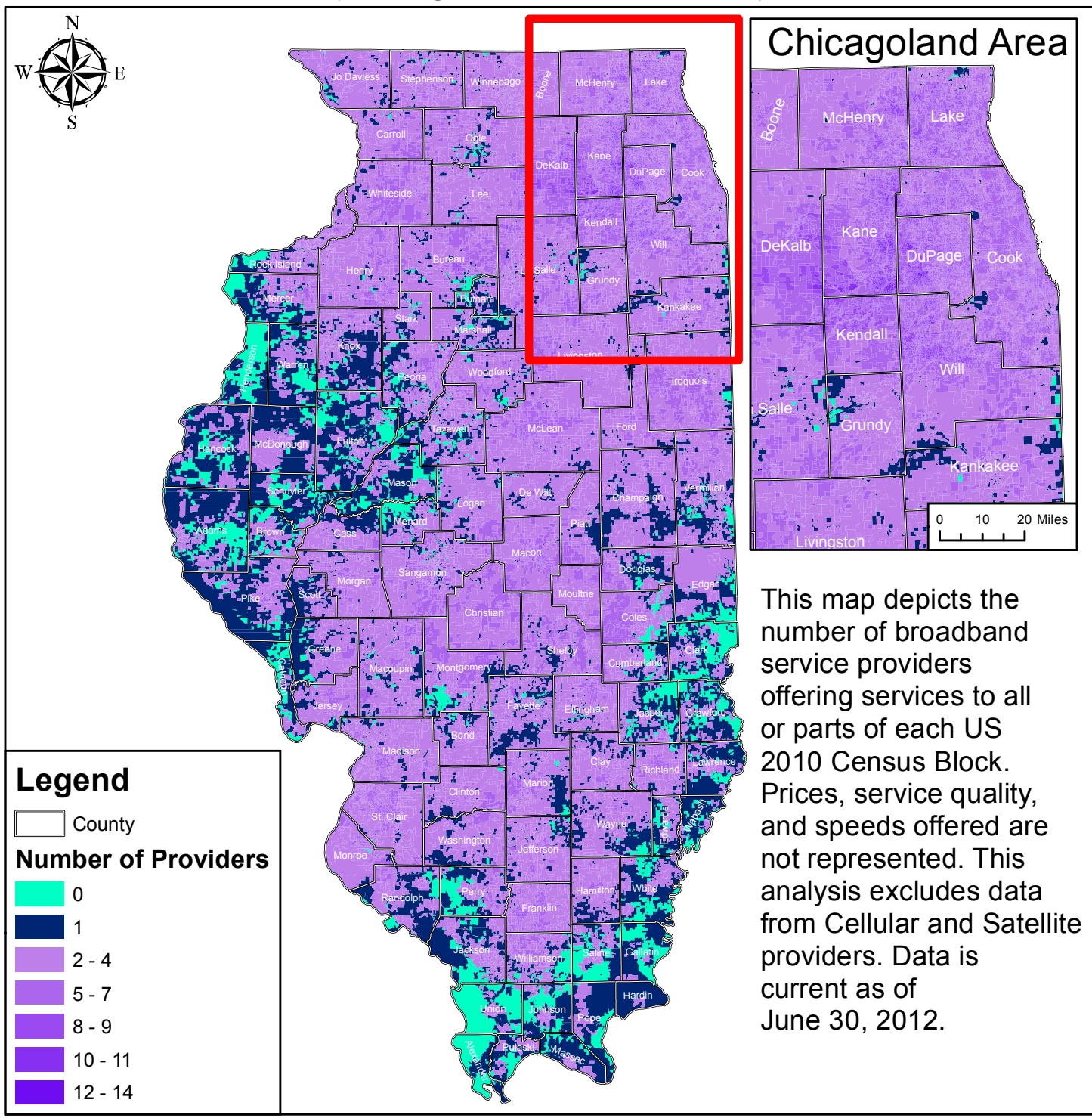




Number of Broadband Providers per Census Block (Excluding Cellular & Satellite Providers)



This map depicts the number of broadband service providers offering services to all or parts of each US 2010 Census Block. Prices, service quality, and speeds offered are not represented. This analysis excludes data from Cellular and Satellite providers. Data is current as of June 30, 2012.

Partnership for a Connected Illinois - November 30, 2012



DISCLAIMER: This map is meant to be used for preliminary review purposes only. The information depicted on this map is based on a limited amount of available data, and thus there are inherent inaccuracies. As more complete data is collected, the map will be updated and will contain more accurate information. This map should not be used to make any decisions regarding the served, underserved, and not served areas. The NTIA definition of Broadband is greater than or equal to 768kbps at this time. (c) 2012 The Partnership for a Connected Illinois and/or the State of Illinois